



# UPTON

GARDENS E13

## LYALL HOUSE APARTMENTS

---

YOUR VERY OWN PIECE OF SPORTING HISTORY

---

BARRATT  
— LONDON —

---

LUXURY LIVING  
WITH A RICH  
SPORTING HISTORY

---





## Your very own piece of sporting history

The impressive new Upton Gardens development will be constructed on the former stadium of West Ham Football Club. Situated in Upton Park in the London Borough of Newham, East London, this historic location was home to the club from 1904 before it relocated to Stratford Olympic Park in 2016. With this impressive football heritage, owning a property in Upton Gardens is a once in a lifetime opportunity to secure your piece of British sporting history.

Fitness fans will be pleased to know that the sporting connection doesn't end there - nearby Stratford, home of the 2012 Olympics, boasts impressive facilities: the London Aquatics Centre, the Copper Box Arena gym and Lee Valley VeloPark are a mere 11 minutes away by public transport. On Upton Park's bustling thoroughfare, Green Street, the area's local Asian

culture is evident by the colourful sari shops, fruit and textile markets and bakeries. Away from the high street, you can also find a surprising amount of green spaces, such as West Ham Park and Beckton Park, both walking distance away.

Nearby Stratford has enjoyed a comprehensive and successful local area regeneration. By 2025 it is estimated that £22 billion will have been invested in the borough of Newham, creating more than 35,000 new homes and 100,000 new jobs.\* With Crossrail coming to the area in 2019, Upton Gardens' already excellent transport options will be boosted further, making it an unrivalled location for both work and play.

\*<https://www.newham.gov.uk/Pages/Services/Regeneration-projects.aspx>



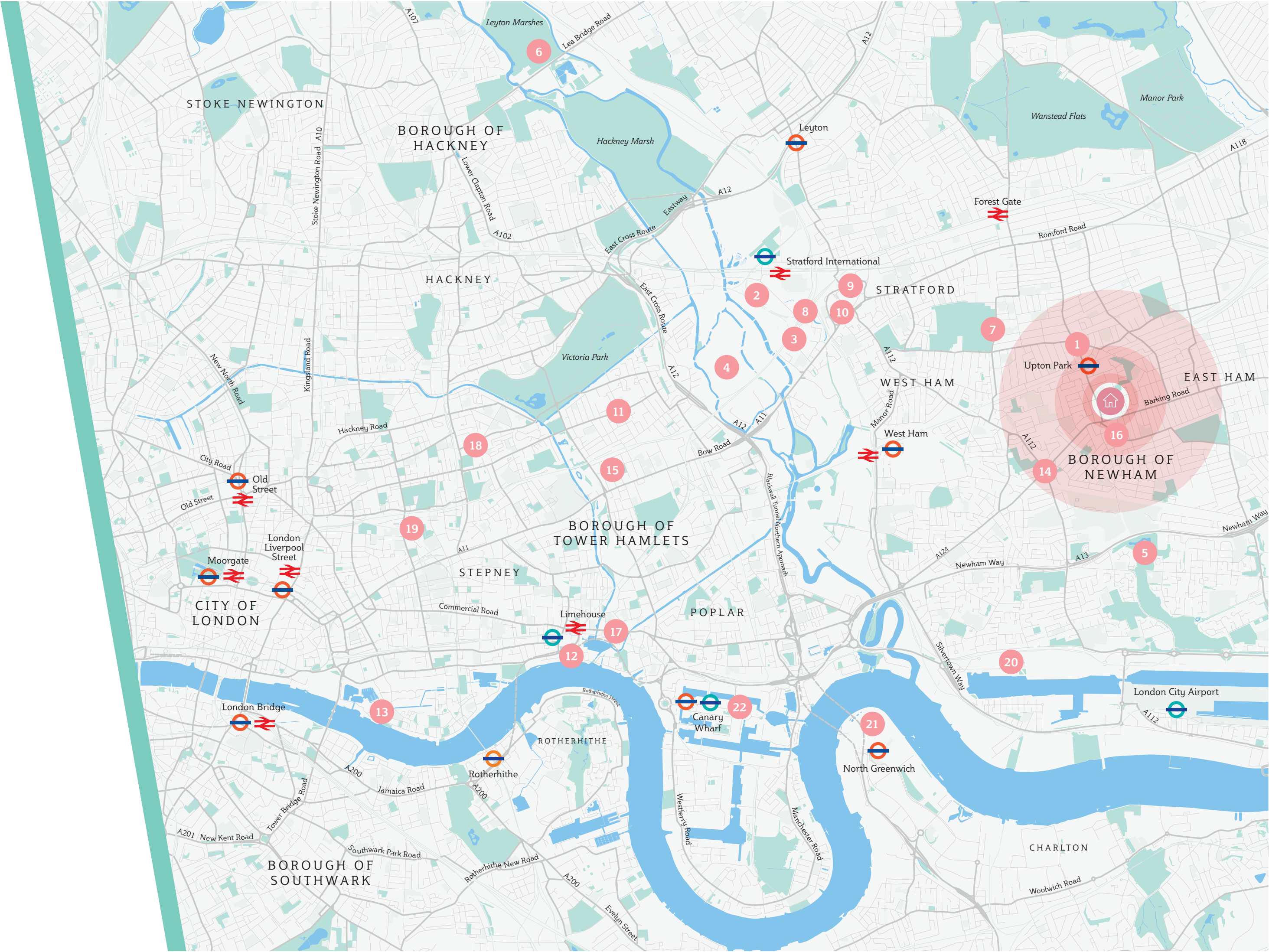
# Great transport links on your doorstep

Conveniently located in Zone 3, Upton Gardens is a 6-minute walk from Upton Park Underground station, east of the busy shopping and entertainment centre of Stratford and the nearby Olympic Stadium. It is north-east of the O2 centre with its own shops, restaurants and of course, its huge event venue.

## The local area

Here's a quick guide to a few local hotspots you can discover in the area.

- 01 Queen's Market
- 02 Queen Elizabeth Olympic Park
- 03 London Aquatic Centre
- 04 West Ham Football Club
- 05 Beckton District Park
- 06 Lea Valley ice rink, riding school and park
- 07 West Ham Park
- 08 Westfield
- 09 Theatre Royal Stratford East
- 10 Stratford Circus Picture House
- 11 Roman Road Market
- 12 The Narrow
- 13 Smiths Brasserie
- 14 Ginny's Pie and Mash
- 15 Greedy Cow
- 16 The Boleyn Tavern
- 17 Limehouse Gallery
- 18 V&A museum of childhood
- 19 Brick Lane market
- 20 Excel Exhibition Centre
- 21 O2
- 22 Canary Wharf








Great transport links on your doorstep

“Upton Gardens is in Zone 3, with easy, quick connections to both Stratford and central London.”

Upton Park Underground station, 6 minutes from the development, operates on the District and Hammersmith & City lines with direct links to central London. Reach Liverpool Street in 15 minutes, Canary Wharf in 16 minutes and the West End in 31 minutes. When Crossrail arrives at nearby Forest Gate in 2019, the area will be even better connected – Canary Wharf will then just be 8 minutes away and Tottenham Court Road 17 minutes.


11 minutes to Stratford
15 minutes to Liverpool Street
16 minutes to Canary Wharf
17 minutes to Bank
20 minutes to London City Airport
23 minutes to London Bridge
25 minutes to Waterloo
25 minutes to Oxford Circus
29 minutes to King’s Cross
31 minutes to Piccadilly Circus
32 minutes to Victoria
1 hr to Heathrow Airport (via Heathrow Express)
1 hr 05 minutes to Stansted Airport
1 hr 10 minutes to Gatwick Airport


6 minutes to Upton Park Underground station
9 minutes to Queen’s Market
14 minutes to West Ham Park


10 minutes to Theatre Royal Stratford East
10 minutes to Stratford Circus Picture House
17 minutes to Westfield
21 minutes to Roman Road Market

14 minutes to London City (3.8 miles)
41 minutes to Stansted (31.5 miles)
1 hr 8 minutes to Gatwick (48.3 miles)
1 hr 14 minutes to Heathrow (34.5 miles)



Travel times are approximate.  
Sources: tfl.gov.uk and  
Maps.google.com  
\*Without traffic





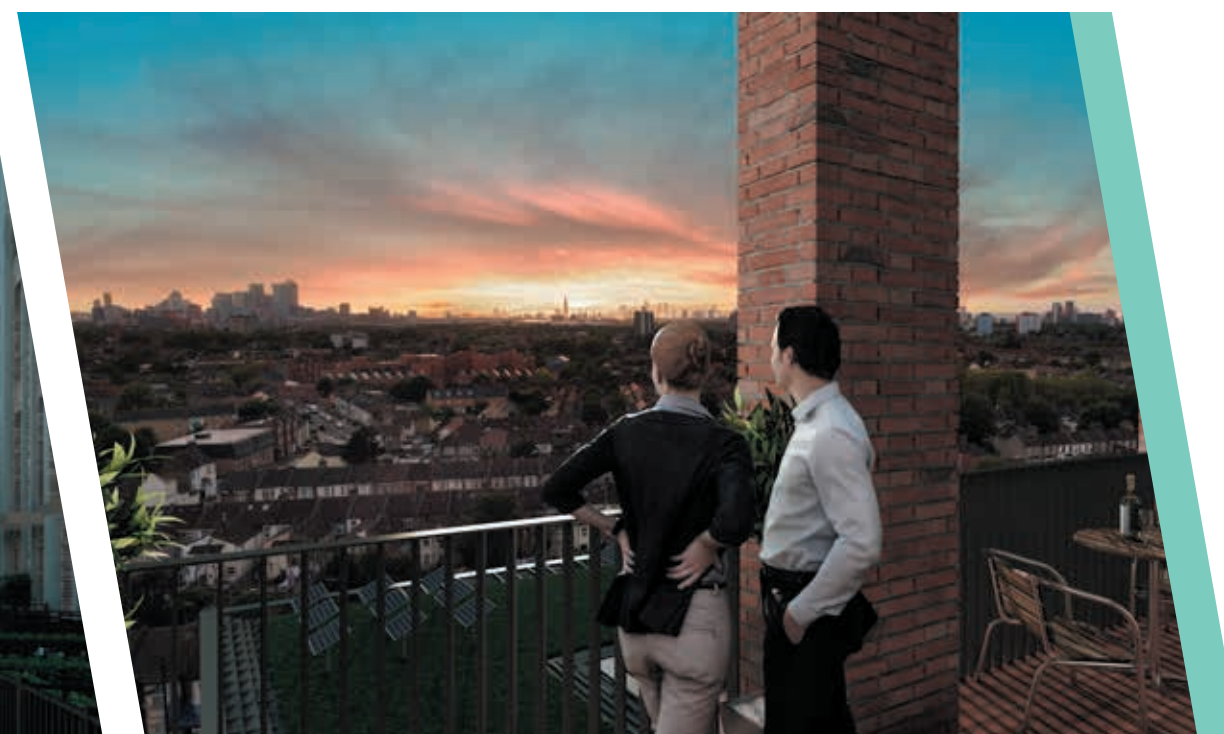
*"The football legacy is referenced throughout the development. The buildings are being designed to follow the footprint of the stadium itself, from a small circus above the position of the pitch's centre circle, right down to the balcony latticework reflecting football goal nets."*

## An exciting new destination with sporting flavour

Upton Gardens is a new development in East London built on the site of the historic West Ham Football Club ground. It offers a mix of 842 one, two, three and four-bedroom homes. Boleyn Ground's name is derived from the area's royal connection, as Anne Boleyn (one of Henry VIII's 6 wives) was rumoured to have lived in a house that stood next to the ground called Boleyn Castle.

The development has been designed to maximise green areas - all homes will include private outdoor space, as well as access to communal gardens and landscaping, including a direct walkway to Priory Park behind the development.

The design of Upton Gardens strongly identifies with the former football ground it is built on, with the layout of the buildings shadowing the layout of the old stadium and a small circus exactly where the centre circle of the pitch was.







*“Generous glazing connects living rooms with private balconies and terraces giving a flow of space from inside to outside and to vistas beyond.”*

## Modern and stylish throughout

Relax in modern configured spaces, which offer tasteful decor throughout. Living areas have been designed to maximise your natural light. And when the day is over, the soft lighting creates a cosy glow to light your evenings.

Modern kitchens feature built-in appliances while bathrooms and en-suites have brassware by Grohe and attractive ceramic floor tiling.



Images are from a previous Barratt London development and are indicative only.









“London is seen the world over as a centre of educational excellence, and nearly half a million students call it home.”



## Smartly located

Upton Gardens is within easy reach of both the Stratford and Docklands campuses of the University of East London, with its teacher training and range of undergraduate and postgraduate courses. It also offers easy access to the main campus of Queen Mary, University of London in Mile End, which specialises in business and science.

The local area also contains a number of schools rated ‘Outstanding’ by OFSTED.

The closest includes Cleves Primary School, a 5-minute walk from the development, and Upton Cross Primary School, an 8-minute walk. There are three other outstanding primaries within a mile of the development.

In addition, there are a number of excellent secondary schools near the development, including Brampton Manor Academy and Plashet School.

Universities	Secondary Schools
<b>Cycling from Upton Gardens</b>	<b>Cycling from Upton Gardens</b>
<b>6 minutes</b> to University of East London	<b>5 minutes</b> to St Angela's Ursuline School
<b>23 minutes</b> to Queen Mary University of London	<b>5 minutes</b> to St Bonaventure's RC School
<b>41 minutes</b> to University of London	<b>7 minutes</b> to Brampton Manor Academy
	<b>8 minutes</b> to Plashet School
<b>Tube from Upton Park</b>	
<b>40 minutes</b> to London Southbank University	
<b>36 minutes</b> to London School of Economics and Political Science	
<b>43 minutes</b> to London Metropolitan University	
<b>Primary Schools</b>	
<b>Walking from Upton Gardens</b>	
<b>5 minutes</b> to Cleves Primary School	
<b>11 minutes</b> to Plaistow Primary School	
<b>12 minutes</b> to Upton Cross Primary School	
<b>12 minutes</b> to St Stephen's Primary School	
<b>16 minutes</b> to Shaftesbury Primary School	
<b>20 minutes</b> to Selwyn Primary School	
Travel times are approximate. Sources: tfl.gov.uk and Maps.google.com	









## Join the sporting legends

Whether it's working out in the gym, a leisurely stroll somewhere green or cycling along the river, you'll find it all on your doorstep at Upton Gardens.

East London, the Orbit, standing 178 metres tall, is now open to the public as a slide, whizzing you around the structure 12 times in 40 seconds!

If you enjoy sports and fitness, Stratford has it all with its Olympic heritage sites. The London Aquatic Centre is one such site, and includes two 50m pools, a 25m diving pool and a state-of-the-art gym and fitness facility. You'll also find the new West Ham Football Club stadium nearby. And towering over

Nearby, Lee Valley Park's nature reserves and riverside trails are a great place to jog, stroll or cycle. Walking distance from the development is West Ham Park and Beckton District Park where the undulating grassland, lake and natural woodland provide a lovely setting for walks or picnics.







## A feast for taste buds and wallets

On Upton Park's bustling high street, the area's local Asian culture is evident by the colourful sari shops, fruit & textile markets and bakeries offering mouth-watering fare. Close by, Westfield caters for all your shopping needs from designer to high street brands. And when evening falls, there are bars, pubs, restaurants, a bowling alley and a 17 screen cinema to choose from.

Canary Wharf and its offering of lively bars and restaurants are also only a

short journey away meaning you will never be short of choice for a great night out.

For the bargain hunters out there, you'll find vintage fashion and homeware at the little known gem, Roman Road market - a mere 10 minutes away by Tube.

And for even more variety, head to bohemian Mile End, home to quirky atelier cafés and independently owned restaurants catering to every palate.







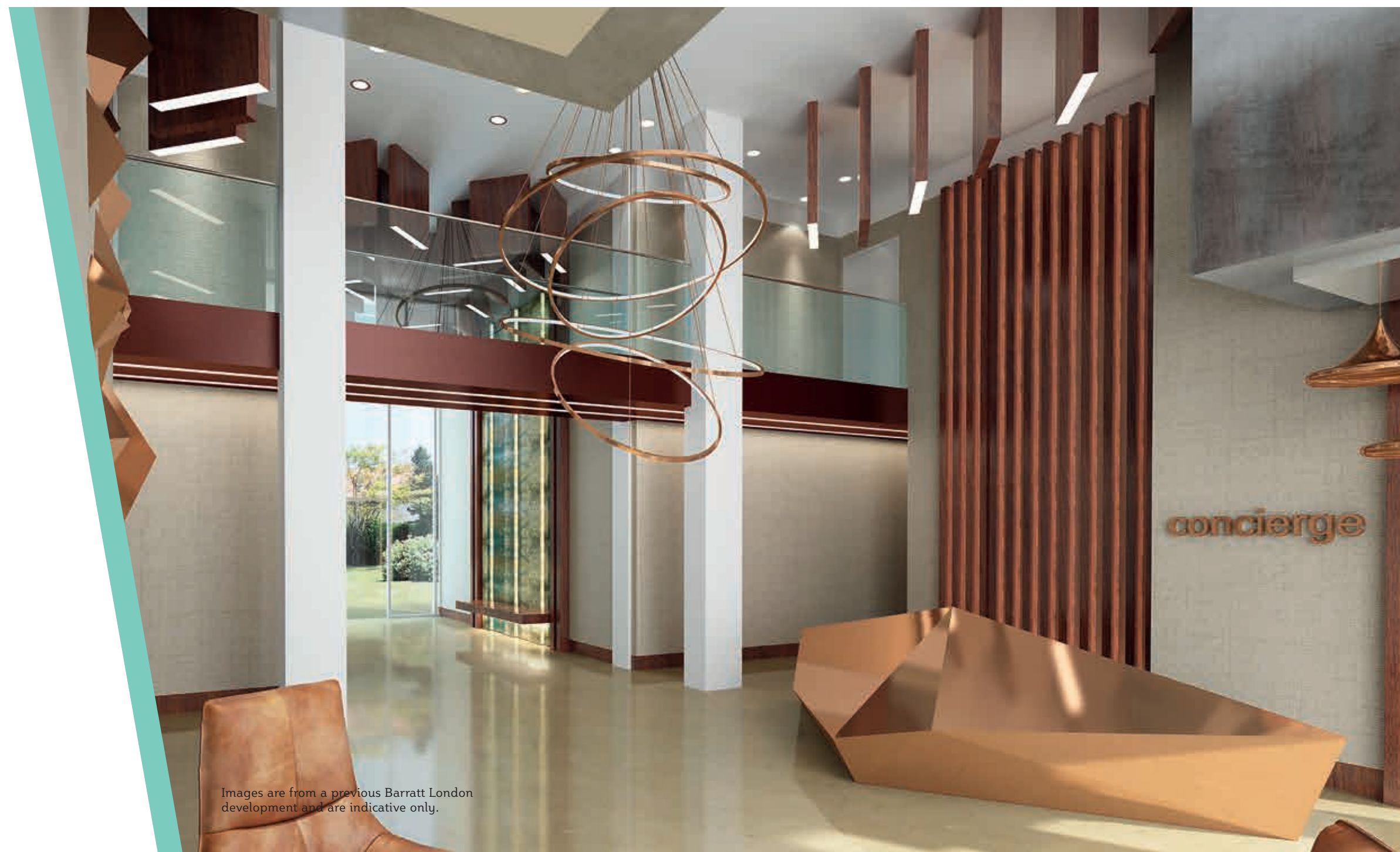


## For your comfort and convenience

As an Upton Gardens resident, you will enjoy facilities such as a concierge, fully equipped gym and underground parking. There is storage for over 1000 bikes, and the area benefits from good cycle links to central London - Cycle Superhighway 2 runs directly from Stratford to Aldgate.

In addition, a number of new community amenities such as a large public library and cafés are being built as part of the site.

The development has a number of eco-friendly features. All buildings are designed with high thermal performance glass so you can stay cool in summer and warm in the winter. The on-site energy centre generates efficient energy for the site, including solar panels on rooftops, all of which means you pay less for your energy bills. There are also 64 electric vehicle charge points and 8 car club vehicles for your use.



Images are from a previous Barratt London development and are indicative only.





# Site plan

- |                   |                                     |
|-------------------|-------------------------------------|
| 1 Memorial Walk   | 6 Community Facility                |
| 2 Priory Park     | 7 St Edwards RC Primary School      |
| 3 Residents' Gym  | 8 Affordable Rent/ Shared Ownership |
| 4 Commercial Unit | 9 Basement car park entrance/exit   |
| 5 Concierge       |                                     |

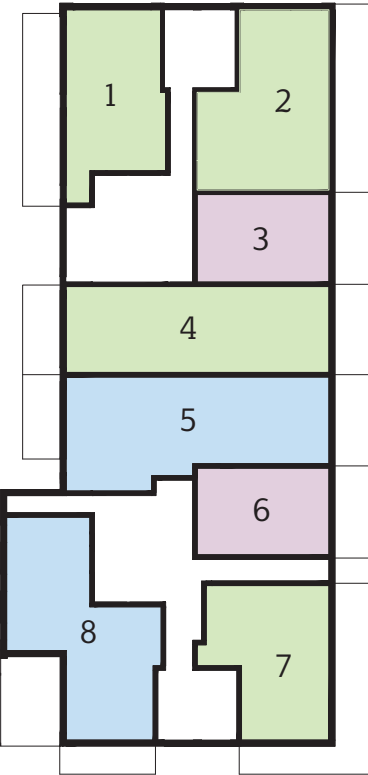




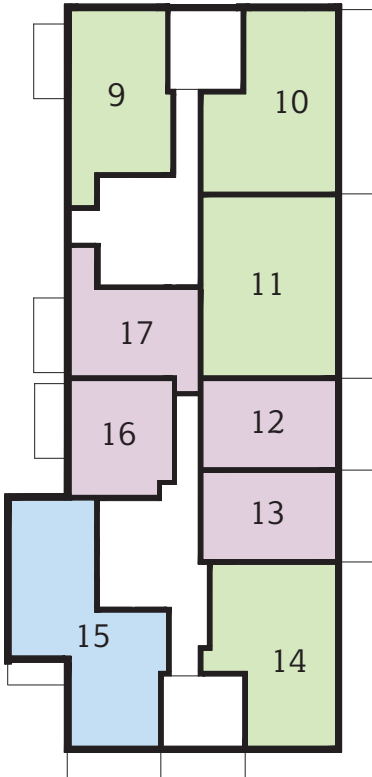


One-bedroom apartments
Two-bedroom apartments
Three-bedroom apartments

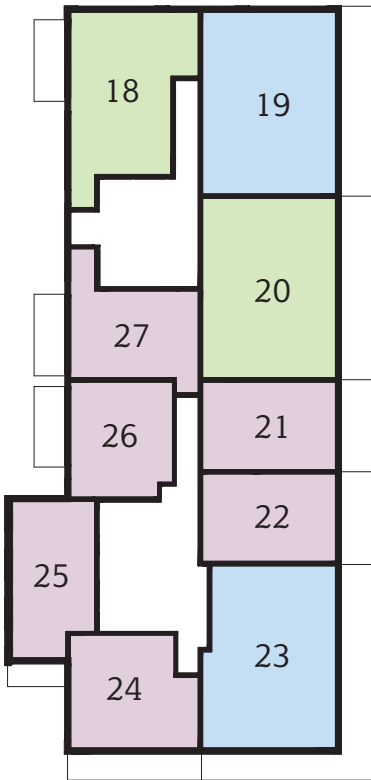
Ground Level



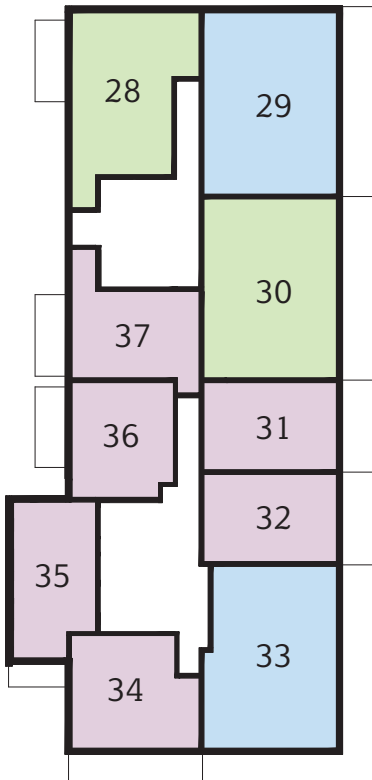
Level 1



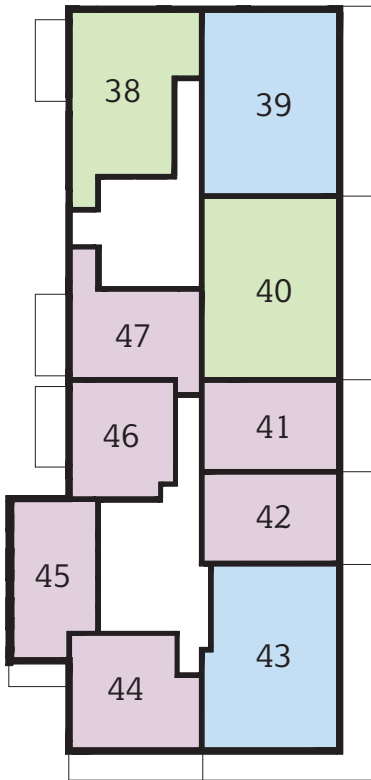
Level 2



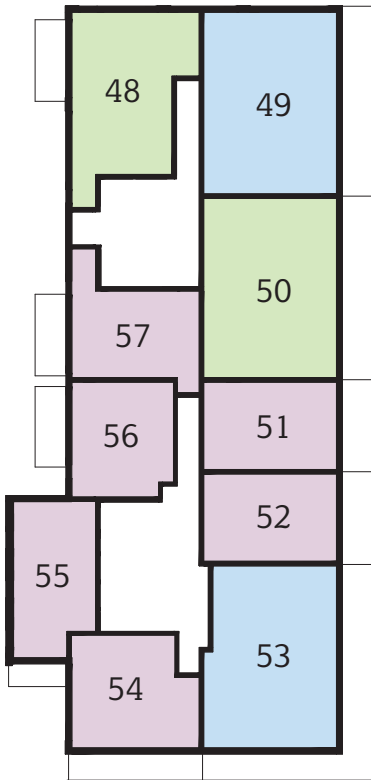
Level 3



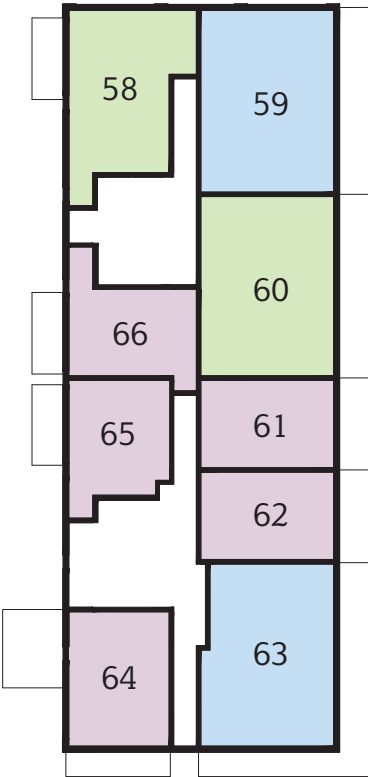
Level 4



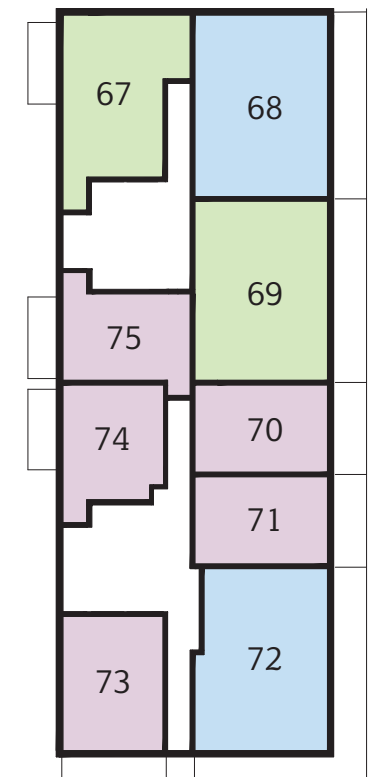
Level 5



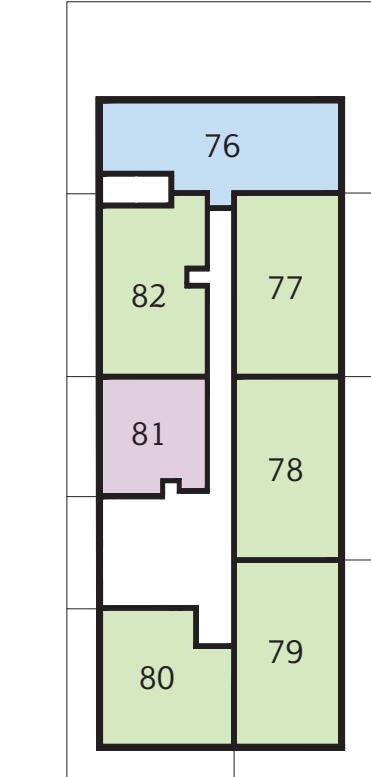
Level 6



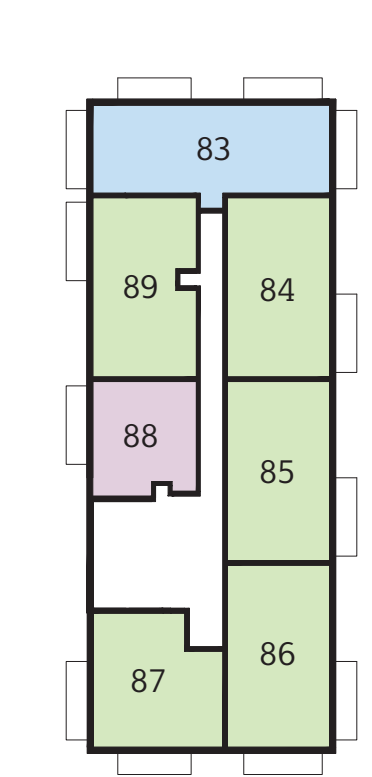
Level 7



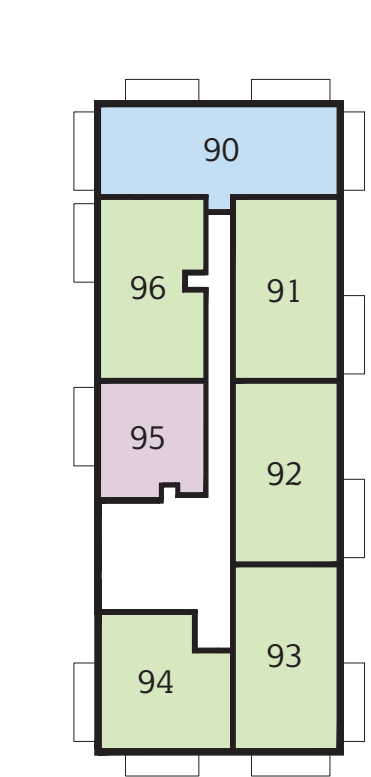
Level 8



Level 9

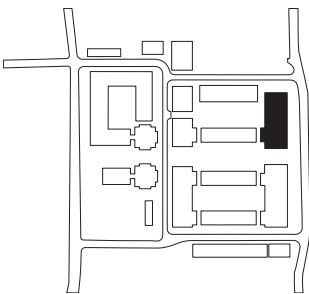


Level 10





Lyall House  
Ground Level

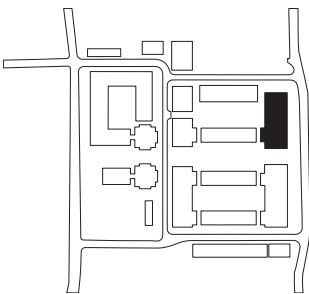


PLOT 1 (0)	PLOT 2 (0)	PLOT 3 (0)	PLOT 4 (0)
<b>Kitchen</b> 17'6" x 6'6" (5330 x 1990mm)	<b>Kitchen</b> 14'0" x 8'0" (4260 x 2450mm)	<b>Kitchen</b> 9'0" x 7'10" (2750 x 2400mm)	<b>Kitchen</b> 13'9" x 5'11" (4200 x 1800mm)
<b>Living/Dining</b> 14'0" x 13'3" (4255 x 4045mm)	<b>Living/Dining</b> 20'10" x 11'3" (6350 x 3440mm)	<b>Living/Dining</b> 19'7" x 9'9" (5970 x 2980mm)	<b>Living/Dining</b> 21'1" x 18'9" (6420 x 5720mm)
<b>Bedroom 1</b> 14'6" x 10'10" (4410 x 3290mm)	<b>Bedroom 1</b> 21'7" x 9'0" (6590 x 2750mm)	<b>Bedroom</b> 15'11" x 9'0" (4840 x 2750mm)	<b>Bedroom 1</b> 19'2" x 9'3" (5830 x 2810mm)
<b>En suite</b> 6'10" x 4'9" (2085 x 1445mm)	<b>En suite</b> 6'10" x 5'0" (2085 x 1535mm)	<b>Bathroom</b> 6'10" x 6'6" (2085 x 1985mm)	<b>En suite</b> 6'10" x 5'0" (2085 x 1535mm)
<b>Bedroom 2</b> 13'7" x 10'6" (4130 x 3200mm)	<b>Bedroom 2</b> 17'11" x 9'0" (5450 x 2750mm)	<b>TOTAL AREA</b> 550 sq ft (51.1 sq m)	<b>Bedroom 2</b> 15'7" x 9'3" (4750 x 2820mm)
<b>Bathroom</b> 6'10" x 6'6" (2085 x 1985mm)	<b>Bathroom</b> 6'10" x 6'6" (2085 x 1985mm)	<b>Terrace</b> 19'9" x 7'2" (6025 x 2180mm)	<b>Bathroom</b> 6'10" x 6'6" (2085 x 1985mm)
<b>TOTAL AREA</b> 776 sq ft (72.1 sq m)	<b>TOTAL AREA</b> 962 sq ft (89.4 sq m)		<b>TOTAL AREA</b> 1077 sq ft (100.0 sq m)
<b>Terrace</b> 40'1" x 6'9" (12225 x 2065mm)	<b>Terrace</b> 40'11" x 7'2" (12480 x 2180mm)		<b>Terrace 1</b> 19'8" x 7'2" (6005 x 2180mm)
			<b>Terrace 2</b> 19'7" x 7'11" (5960 x 2405mm)

PLOT 5 (0)	PLOT 6 (0)	PLOT 7 (0)	PLOT 8 (0)
<b>Kitchen</b> 13'9" x 5'11" (4200 x 1800mm)	<b>Kitchen</b> 11'10" x 5'11" (3600 x 1810mm)	<b>Kitchen</b> 11'10" x 6'3" (3600 x 1900mm)	<b>Living/Dining/Kitchen</b> 19'10" x 19'2" (6040 x 5840mm)
<b>Living/Dining</b> 20'11" x 18'11" (6380 x 5775mm)	<b>Living/Dining</b> 17'0" x 9'8" (5175 x 2945mm)	<b>Living/Dining</b> 15'0" x 12'9" (4575 x 3880mm)	<b>Bedroom 1</b> 14'6" x 9'8" (4415 x 2945mm)
<b>Bedroom 1</b> 22'10" x 9'0" (6960 x 2750mm)	<b>Bedroom</b> 17'5" x 9'0" (5310 x 2750mm)	<b>Bedroom 1</b> 19'1" x 9'0" (5825 x 2750mm)	<b>En suite</b> 6'10" x 5'0" (2085 x 1535mm)
<b>En suite</b> 6'10" x 5'0" (2085 x 1535mm)	<b>Bathroom</b> 6'10" x 6'6" (2085 x 1985mm)	<b>En suite</b> 6'10" x 5'0" (2085 x 1535mm)	<b>Bedroom 2</b> 11'0" x 11'0" (3365 x 3350mm)
<b>Bedroom 2</b> 19'1" x 9'0" (5810 x 2750mm)	<b>TOTAL AREA</b> 545 sq ft (50.6 sq m)	<b>Bedroom 2</b> 11'6" x 9'3" (3510 x 2830mm)	<b>Bedroom 3</b> 14'6" x 8'5" (4415 x 2560mm)
<b>Bedroom 3</b> 18'3" x 8'11" (5570 x 2730mm)	<b>Terrace</b> 19'8" x 7'2" (6005 x 2180mm)	<b>Bathroom</b> 6'10" x 6'6" (2085 x 1985mm)	<b>Bathroom</b> 6'10" x 6'6" (2085 x 1985mm)
<b>Bathroom</b> 6'10" x 6'6" (2085 x 1985mm)		<b>TOTAL AREA</b> 788 sq ft (73.2 sq m)	<b>TOTAL AREA</b> 1052 sq ft (97.7 sq m)
<b>TOTAL AREA</b> 1221 sq ft (113.4 sq m)		<b>Terrace 1</b> 40'0" x 7'2" (12200 x 2180mm)	<b>Terrace 1</b> 21'5" x 5'7" (6535 x 1695mm)
<b>Terrace 1</b> 19'8" x 7'2" (6005 x 2180mm)		<b>Terrace 2</b> 22'1" x 5'6" (6750 x 1695mm)	<b>Terrace 2</b> 18'10" x 12'9" (5745 x 3895mm)
<b>Terrace 2</b> 19'7" x 7'11" (5980 x 2405mm)			



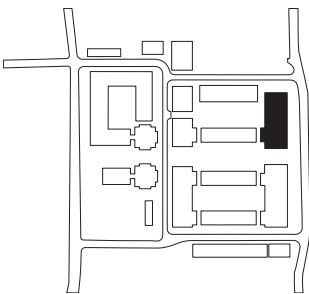
Lyall House  
Level 1



PLOT 9 (1)	PLOT 10 (1)	PLOT 11 (1)	PLOT 12 (1) & 13 (1)
<b>Kitchen</b> 17'6" x 6'6" (5330 x 1990mm)	<b>Kitchen</b> 14'0" x 8'0" (4260 x 2450mm)	<b>Kitchen</b> 13'8" x 8'0" (4155 x 2440mm)	<b>Kitchen</b> 11'10" x 5'11" (3600 x 1810mm)
<b>Living/Dining</b> 13'10" x 13'3" (4210 x 4040mm)	<b>Living/Dining</b> 20'10" x 11'3" (6350 x 3440mm)	<b>Living/Dining</b> 20'7" x 18'0" (6285 x 5480mm)	<b>Living/Dining</b> 17'0" x 9'8" (5175 x 2945mm)
<b>Bedroom 1</b> 14'6" x 10'10" (4410 x 3290mm)	<b>Bedroom 1</b> 21'7" x 9'0" (6590 x 2750mm)	<b>Bedroom 1</b> 14'2" x 10'6" (4315 x 3200mm)	<b>Bedroom</b> 17'5" x 9'0" (5310 x 2750mm)
<b>En suite</b> 6'10" x 4'9" (2085 x 1445mm)	<b>En suite</b> 6'10" x 5'0" (2085 x 1535mm)	<b>En suite</b> 6'10" x 5'0" (2085 x 1535mm)	<b>Bathroom</b> 6'10" x 6'6" (2085 x 1985mm)
<b>Bedroom 2</b> 13'7" x 10'6" (4130 x 3200mm)	<b>Bedroom 2</b> 17'11" x 9'0" (5450 x 2750mm)	<b>Bedroom 2</b> 16'3" x 9'11" (4950 x 3010mm)	<b>TOTAL AREA</b> 545 sq ft (50.6 sq m)
<b>Bathroom</b> 6'10" x 6'6" (2085 x 1985mm)	<b>Bathroom</b> 6'10" x 6'6" (2085 x 1985mm)	<b>Bathroom</b> 9'0" x 8'1" (2735 x 2465mm)	<b>Balcony</b> 19'9" x 6'6" (6025 x 1980mm)
<b>TOTAL AREA</b> 777 sq ft (72.2 sq m)	<b>TOTAL AREA</b> 962 sq ft (89.4 sq m)	<b>TOTAL AREA</b> 1118 sq ft (103.9 sq m)	
<b>Balcony</b> 16'7" x 5'0" (5045 x 1535mm)	<b>Balcony</b> 40'4" x 6'5" (12300 x 1980mm)	<b>Balcony</b> 39'8" x 6'6" (12100 x 1980mm)	
PLOT 14 (1)	PLOT 15 (1)	PLOT 16 (1)	PLOT 17 (1)
<b>Kitchen</b> 16'0" x 5'11" (4875 x 1800mm)	<b>Living/Dining/Kitchen</b> 19'10" x 19'0" (6040 x 5795mm)	<b>Kitchen</b> 10'10" x 6'0" (3310 x 1830mm)	<b>Kitchen</b> 11'10" x 5'11" (3600 x 1800mm)
<b>Living/Dining</b> 20'5" x 13'0" (6220 x 3970mm)	<b>Bedroom 1</b> 13'4" x 12'9" (4070 x 3875mm)	<b>Living/Dining</b> 15'11" x 11'9" (4840 x 3570mm)	<b>Living/Dining</b> 15'8" x 9'6" (4770 x 2890mm)
<b>Bedroom 1</b> 19'8" x 9'0" (5990 x 2750mm)	<b>En suite</b> 6'10" x 5'0" (2085 x 1535mm)	<b>Bedroom</b> 12'11" x 11'4" (3945 x 3445mm)	<b>Study</b> 9'2" x 5'2" (2790 x 1570mm)
<b>En suite</b> 6'10" x 5'0" (2085 x 1535mm)	<b>Bedroom 2</b> 11'0" x 11'0" (3365 x 3350mm)	<b>Bathroom</b> 6'10" x 6'6" (2085 x 1985mm)	<b>Bedroom</b> 15'3" x 9'0" (4660 x 2750mm)
<b>Bedroom 2</b> 13'5" x 9'6" (4080 x 2900mm)	<b>Bedroom 3</b> 14'6" x 10'1" (4415 x 3070mm)	<b>TOTAL AREA</b> 538 sq ft (50.0 sq m)	<b>Bathroom</b> 6'10" x 6'6" (2085 x 1985mm)
<b>Bathroom</b> 6'10" x 6'6" (2085 x 1985mm)	<b>Bathroom</b> 6'10" x 6'6" (2085 x 1985mm)	<b>Balcony</b> 16'7" x 5'0" (5045 x 1535mm)	<b>TOTAL AREA</b> 581 sq ft (54.0 sq m)
<b>TOTAL AREA</b> 942 sq ft (87.5 sq m)	<b>TOTAL AREA</b> 1135 sq ft (105.5 sq m)		<b>Balcony</b> 16'7" x 5'0" (5045 x 1535mm)
<b>Balcony 1</b> 46'8" x 6'6" (14235 x 1980mm)	<b>Balcony 1</b> 20'7" x 5'5" (6280 x 1640mm)		
<b>Balcony 2</b> 21'5" x 5'4" (6550 x 1640mm)	<b>Balcony 2</b> 12'1" x 4'8" (3695 x 1415mm)		



Lyall House  
Levels 2, 3, 4 and 5



APARTMENT TYPE A

<b>Plot number (floor)</b> 18 (2), 28 (3), 38 (4) & 48 (5)
<b>Kitchen</b> 13'8" x 8'6" (4170 x 2600mm)
<b>Living/Dining</b> 18'10" x 13'9" (5735 x 4190mm)
<b>Bedroom 1</b> 14'6" x 10'10" (4410 x 3290mm)
<b>En suite</b> 6'10" x 4'9" (2085 x 1445mm)
<b>Bedroom 2</b> 14'7" x 10'0" (4450 x 3055mm)
<b>Bathroom</b> 6'10" x 6'6" (2085 x 1985mm)
<b>TOTAL AREA</b> 878 sq ft (81.6 sq m)
<b>Balcony</b> 16'7" x 5'0" (5045 x 1535mm)

APARTMENT TYPE B

<b>Plot number (floor)</b> 19 (2), 29 (3), 39 (4) & 49 (5)
<b>Kitchen</b> 14'0" x 7'0" (4260 x 2145mm)
<b>Living/Dining</b> 19'11" x 11'7" (6070 x 3525mm)
<b>Bedroom 1</b> 21'7" x 9'10" (6600 x 3000mm)
<b>En suite</b> 6'10" x 5'0" (2085 x 1535mm)
<b>Bedroom 2</b> 13'11" x 9'0" (4250 x 2750mm)
<b>Bedroom 3</b> 13'3" x 9'11" (4030 x 3020mm)
<b>Bathroom</b> 8'11" x 8'3" (2725 x 2505mm)
<b>TOTAL AREA</b> 1130 sq ft (104.9 sq m)
<b>Balcony</b> 40'4" x 6'6" (12300 x 1980mm)

APARTMENT TYPE C

<b>Plot number (floor)</b> 20 (2), 30 (3), 40 (4) & 50 (5)
<b>Kitchen</b> 13'8" x 8'0" (4155 x 2440mm)
<b>Living/Dining</b> 20'7" x 18'0" (6285 x 5480mm)
<b>Bedroom 1</b> 14'2" x 10'6" (4315 x 3200mm)
<b>En suite</b> 6'10" x 5'0" (2085 x 1535mm)
<b>Bedroom 2</b> 16'3" x 9'11" (4950 x 3010mm)
<b>Bathroom</b> 9'0" x 8'1" (2735 x 2465mm)
<b>TOTAL AREA</b> 1118 sq ft (103.9 sq m)
<b>Balcony</b> 39'8" x 6'6" (12100 x 1980mm)

APARTMENT TYPE D

<b>Plot number (floor)</b> 21 (2), 22 (2), 31 (3), 32 (3), 41 (4), 42 (4), 51 (5) & 52 (5)
<b>Kitchen</b> 11'10" x 5'11" (3600 x 1810mm)
<b>Living/Dining</b> 17'0" x 9'8" (5175 x 2945mm)
<b>Bedroom</b> 17'5" x 9'0" (5310 x 2750mm)
<b>Bathroom</b> 6'10" x 6'6" (2085 x 1985mm)
<b>TOTAL AREA</b> 545 sq ft (50.6 sq m)
<b>Balcony</b> 19'9" x 6'6" (6025 x 1980mm)

APARTMENT TYPE E

<b>Plot number (floor)</b> 23 (2), 33 (3), 43 (4) & 53 (5)
<b>Kitchen</b> 13'4" x 6'2" (4075 x 1870mm)
<b>Living/Dining</b> 20'2" x 13'4" (6135 x 4070mm)
<b>Bedroom 1</b> 19'8" x 9'10" (5995 x 3000mm)
<b>En suite</b> 6'10" x 5'0" (2085 x 1535mm)
<b>Bedroom 2</b> 14'3" x 9'0" (4335 x 2750mm)
<b>Bedroom 3</b> 15'3" x 9'0" (4655 x 2750mm)
<b>Bathroom</b> 9'0" x 8'1" (2735 x 2465mm)
<b>TOTAL AREA</b> 1095 sq ft (101.7 sq m)
<b>Balcony 1</b> 46'7" x 6'6" (14210 x 1980mm)
<b>Balcony 2</b> 29'11" x 5'4" (9135 x 1640mm)

APARTMENT TYPE F

<b>Plot number (floor)</b> 24 (2), 34 (3), 44 (4) & 54 (5)
<b>Kitchen</b> 9'10" x 7'9" (2985 x 2370mm)
<b>Living/Dining</b> 18'3" x 14'6" (5560 x 4420mm)
<b>Bedroom</b> 14'11" x 9'0" (4545 x 2750mm)
<b>Bathroom</b> 6'10" x 6'6" (2085 x 1985mm)
<b>TOTAL AREA</b> 623 sq ft (57.9 sq m)
<b>Balcony</b> 29'1" x 5'5" (8865 x 1640mm)

APARTMENT TYPE G

<b>Plot number (floor)</b> 25 (2), 35 (3), 45 (4) & 55 (5)
<b>Kitchen</b> 10'10" x 8'2" (3295 x 2480mm)
<b>Living/Dining</b> 12'5" x 11'7" (3780 x 3525mm)
<b>Bedroom</b> 13'1" x 10'8" (3985 x 3250mm)
<b>Bathroom</b> 6'10" x 6'6" (2085 x 1985mm)
<b>TOTAL AREA</b> 570 sq ft (53.0 sq m)
<b>Balcony</b> 12'1" x 4'8" (3695 x 1415mm)

APARTMENT TYPE H

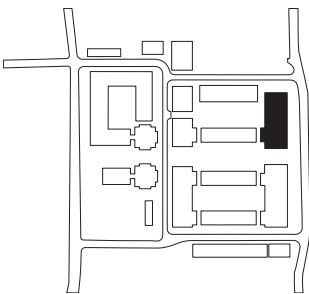
<b>Plot number (floor)</b> 26 (2), 36 (3), 46 (4) & 56 (5)
<b>Kitchen</b> 10'10" x 6'0" (3310 x 1830mm)
<b>Living/Dining</b> 15'11" x 11'9" (4840 x 3570mm)
<b>Bedroom</b> 12'11" x 11'4" (3945 x 3445mm)
<b>Bathroom</b> 6'10" x 6'6" (2085 x 1985mm)
<b>TOTAL AREA</b> 538 sq ft (50.0 sq m)
<b>Balcony</b> 16'7" x 5'0" (5045 x 1535mm)

APARTMENT TYPE I

<b>Plot number (floor)</b> 27 (2), 37 (3), 47 (4) & 57 (5)
<b>Kitchen</b> 11'10" x 5'11" (3600 x 1800mm)
<b>Living/Dining</b> 15'8" x 9'6" (4770 x 2890mm)
<b>Study</b> 9'2" x 5'2" (2790 x 1570mm)
<b>Bedroom</b> 15'3" x 9'0" (4660 x 2750mm)
<b>Bathroom</b> 6'10" x 6'6" (2085 x 1985mm)
<b>TOTAL AREA</b> 581 sq ft (54.0 sq m)
<b>Balcony</b> 16'7" x 5'0" (5045 x 1535mm)



Lyall House  
Level 6

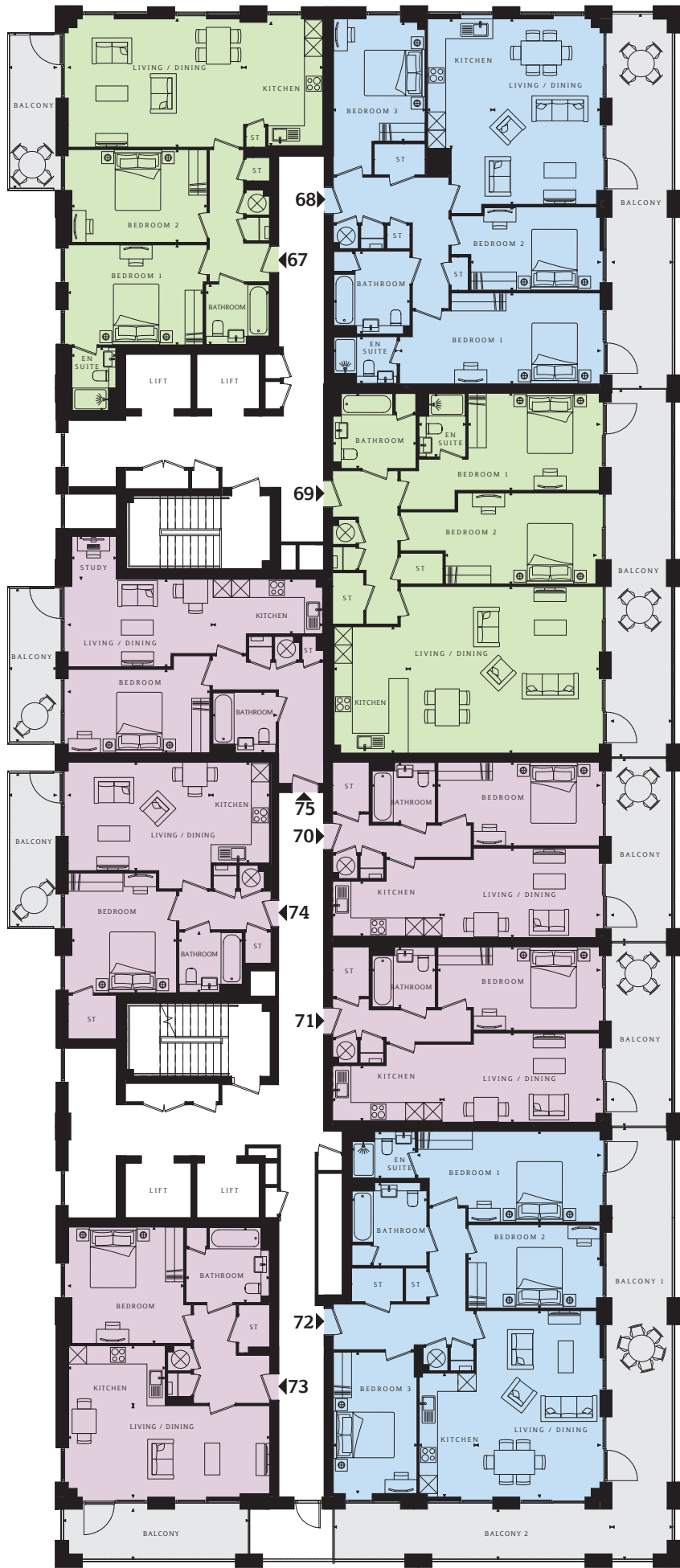
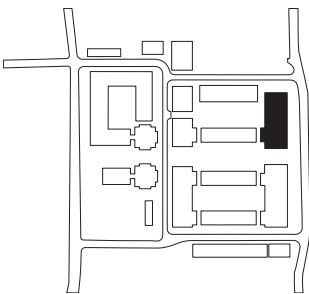


PLOT 58 (6)	PLOT 59 (6)	PLOT 60 (6)	PLOT 61 (6) & 62 (6)
<b>Kitchen</b> 13'8" x 8'6" (4170 x 2600mm)	<b>Kitchen</b> 14'0" x 7'0" (4260 x 2145mm)	<b>Kitchen</b> 13'8" x 8'0" (4155 x 2440mm)	<b>Kitchen</b> 11'10" x 5'11" (3600 x 1810mm)
<b>Living/Dining</b> 18'10" x 13'9" (5735 x 4190mm)	<b>Living/Dining</b> 19'11" x 11'7" (6070 x 3525mm)	<b>Living/Dining</b> 20'7" x 18'0" (6285 x 5480mm)	<b>Living/Dining</b> 17'0" x 9'8" (5175 x 2945mm)
<b>Bedroom 1</b> 14'6" x 10'10" (4410 x 3290mm)	<b>Bedroom 1</b> 21'7" x 9'10" (6600 x 3000mm)	<b>Bedroom 1</b> 14'2" x 10'6" (4315 x 3200mm)	<b>Bedroom</b> 17'5" x 9'0" (5310 x 2750mm)
<b>En suite</b> 6'10" x 4'9" (2085 x 1445mm)	<b>En suite</b> 6'10" x 5'0" (2085 x 1535mm)	<b>En suite</b> 6'10" x 5'0" (2085 x 1535mm)	<b>Bathroom</b> 6'10" x 6'6" (2085 x 1985mm)
<b>Bedroom 2</b> 14'7" x 10'0" (4450 x 3055mm)	<b>Bedroom 2</b> 13'11" x 9'0" (4250 x 2750mm)	<b>Bedroom 2</b> 16'3" x 9'11" (4950 x 3010mm)	<b>TOTAL AREA</b> 545 sq ft (50.6 sq m)
<b>Bathroom</b> 6'10" x 6'6" (2085 x 1985mm)	<b>Bedroom 3</b> 13'3" x 9'11" (4030 x 3020mm)	<b>Bathroom</b> 9'0" x 8'1" (2735 x 2465mm)	<b>Balcony</b> 19'9" x 6'6" (6025 x 1980mm)
<b>TOTAL AREA</b> 878 sq ft (81.6 sq m)	<b>Bathroom</b> 8'11" x 8'3" (2725 x 2505mm)	<b>TOTAL AREA</b> 1118 sq ft (103.9 sq m)	
<b>Balcony</b> 16'7" x 5'0" (5045 x 1535mm)	<b>TOTAL AREA</b> 1130 sq ft (104.9 sq m)	<b>Balcony</b> 39'8" x 6'6" (12100 x 1980mm)	
	<b>Balcony</b> 40'4" x 6'6" (12300 x 1980mm)		

PLOT 63 (6)	PLOT 64 (6)	PLOT 65 (6)	PLOT 66 (6)
<b>Kitchen</b> 13'4" x 6'2" (4075 x 1870mm)	<b>Kitchen</b> 10'5" x 6'6" (3180 x 1975mm)	<b>Kitchen</b> 10'11" x 6'4" (3315 x 1925mm)	<b>Kitchen</b> 11'10" x 5'11" (3600 x 1800mm)
<b>Living/Dining</b> 20'2" x 13'4" (6135 x 4070mm)	<b>Living/Dining</b> 21'9" x 9'10" (6620 x 3005mm)	<b>Living/Dining</b> 15'11" x 11'9" (4855 x 3570mm)	<b>Living/Dining</b> 15'8" x 9'6" (4770 x 2890mm)
<b>Bedroom 1</b> 19'8" x 9'10" (5995 x 3000mm)	<b>Bedroom</b> 12'6" x 12'0" (3825 x 3675mm)	<b>Bedroom</b> 12'11" x 11'4" (3945 x 3445mm)	<b>Study</b> 9'2" x 5'2" (2790 x 1570mm)
<b>En suite</b> 6'10" x 5'0" (2085 x 1535mm)	<b>Bathroom</b> 9'0" x 8'1" (2735 x 2465mm)	<b>Bathroom</b> 6'10" x 6'6" (2085 x 1985mm)	<b>Bedroom</b> 15'3" x 9'0" (4660 x 2750mm)
<b>Bedroom 2</b> 14'3" x 9'0" (4335 x 2750mm)	<b>TOTAL AREA</b> 629 sq ft (58.4 sq m)	<b>TOTAL AREA</b> 561 sq ft (52.1 sq m)	<b>Bathroom</b> 6'10" x 6'6" (2085 x 1985mm)
<b>Bedroom 3</b> 15'3" x 9'0" (4655 x 2750mm)	<b>Terrace</b> 15'10" x 11'7" (4830 x 3540mm)	<b>Balcony</b> 16'7" x 5'0" (5045 x 1535mm)	<b>TOTAL AREA</b> 581 sq ft (54.0 sq m)
<b>Bathroom</b> 9'0" x 8'1" (2735 x 2465mm)	<b>Balcony</b> 19'11" x 5'5" (6080 x 1640mm)		<b>Balcony</b> 16'7" x 5'0" (5045 x 1535mm)
<b>TOTAL AREA</b> 1095 sq ft (101.7 sq m)			
<b>Balcony 1</b> 46'7" x 6'6" (14210 x 1980mm)			
<b>Balcony 2</b> 29'11" x 5'4" (9135 x 1640mm)			



Lyall House  
Level 7

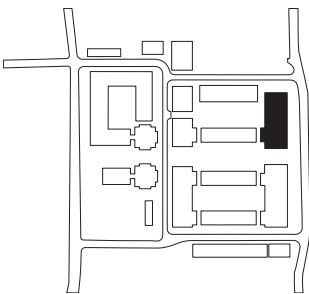


PLOT 67 (7)	PLOT 68 (7)	PLOT 69 (7)	PLOT 70 (7) & 71 (7)
<b>Kitchen</b> 13'8" x 8'6" (4170 x 2600mm)	<b>Kitchen</b> 14'0" x 7'0" (4260 x 2145mm)	<b>Kitchen</b> 13'8" x 8'0" (4155 x 2440mm)	<b>Kitchen</b> 11'10" x 5'11" (3600 x 1810mm)
<b>Living/Dining</b> 18'10" x 13'9" (5735 x 4190mm)	<b>Living/Dining</b> 19'11" x 11'7" (6070 x 3525mm)	<b>Living/Dining</b> 20'7" x 18'0" (6285 x 5480mm)	<b>Living/Dining</b> 17'0" x 9'8" (5175 x 2945mm)
<b>Bedroom 1</b> 14'6" x 10'10" (4410 x 3290mm)	<b>Bedroom 1</b> 21'7" x 9'10" (6600 x 3000mm)	<b>Bedroom 1</b> 14'2" x 10'6" (4315 x 3200mm)	<b>Bedroom</b> 17'5" x 9'0" (5310 x 2750mm)
<b>En suite</b> 6'10" x 4'9" (2085 x 1445mm)	<b>En suite</b> 6'10" x 5'0" (2085 x 1535mm)	<b>En suite</b> 6'10" x 5'0" (2085 x 1535mm)	<b>Bathroom</b> 6'10" x 6'6" (2085 x 1985mm)
<b>Bedroom 2</b> 14'7" x 10'0" (4450 x 3055mm)	<b>Bedroom 2</b> 13'11" x 9'0" (4250 x 2750mm)	<b>Bedroom 2</b> 16'3" x 9'11" (4950 x 3010mm)	<b>TOTAL AREA</b> 545 sq ft (50.6 sq m)
<b>Bathroom</b> 6'10" x 6'6" (2085 x 1985mm)	<b>Bedroom 3</b> 13'3" x 9'11" (4030 x 3020mm)	<b>Bathroom</b> 9'0" x 8'1" (2735 x 2465mm)	<b>Balcony</b> 19'9" x 6'6" (6025 x 1980mm)
<b>TOTAL AREA</b> 878 sq ft (81.6 sq m)	<b>Bathroom</b> 8'11" x 8'3" (2725 x 2505mm)	<b>TOTAL AREA</b> 1118 sq ft (103.9 sq m)	
<b>Balcony</b> 16'7" x 5'0" (5045 x 1535mm)	<b>TOTAL AREA</b> 1130 sq ft (104.9 sq m)	<b>Balcony</b> 39'8" x 6'6" (12100 x 1980mm)	
	<b>Balcony</b> 40'4" x 6'6" (12300 x 1980mm)		

PLOT 72 (7)	PLOT 73 (7)	PLOT 74 (7)	PLOT 75 (7)
<b>Kitchen</b> 13'4" x 6'2" (4075 x 1870mm)	<b>Kitchen</b> 10'5" x 6'6" (3185 x 1975mm)	<b>Kitchen</b> 10'11" x 6'4" (3315 x 1925mm)	<b>Kitchen</b> 11'10" x 5'11" (3600 x 1800mm)
<b>Living/Dining</b> 20'2" x 13'4" (6135 x 4070mm)	<b>Living/Dining</b> 21'9" x 9'10" (6620 x 3005mm)	<b>Living/Dining</b> 15'11" x 11'9" (4855 x 3570mm)	<b>Living/Dining</b> 15'8" x 9'6" (4770 x 2890mm)
<b>Bedroom 1</b> 19'8" x 9'10" (5995 x 3000mm)	<b>Bedroom</b> 12'7" x 12'5" (3825 x 3790mm)	<b>Bedroom</b> 12'11" x 11'4" (3945 x 3445mm)	<b>Study</b> 4'9" x 4'8" (1460 x 1410mm)
<b>En suite</b> 6'10" x 5'0" (2085 x 1535mm)	<b>Bathroom</b> 9'0" x 8'1" (2735 x 2465mm)	<b>Bathroom</b> 6'10" x 6'6" (2085 x 1985mm)	<b>Bedroom</b> 15'3" x 9'0" (4660 x 2750mm)
<b>Bedroom 2</b> 14'3" x 9'0" (4335 x 2750mm)	<b>TOTAL AREA</b> 629 sq ft (58.4 sq m)	<b>TOTAL AREA</b> 561 sq ft (52.1 sq m)	<b>Bathroom</b> 6'10" x 6'6" (2085 x 1985mm)
<b>Bedroom 3</b> 15'3" x 9'0" (4655 x 2750mm)	<b>Balcony</b> 19'11" x 5'5" (6080 x 1640mm)	<b>Balcony</b> 16'7" x 5'0" (5045 x 1535mm)	<b>TOTAL AREA</b> 558 sq ft (51.8 sq m)
<b>Bathroom</b> 9'0" x 8'1" (2735 x 2465mm)			<b>Balcony</b> 16'7" x 5'0" (5045 x 1535mm)
<b>TOTAL AREA</b> 1095 sq ft (101.7 sq m)			
<b>Balcony 1</b> 46'7" x 6'6" (14210 x 1980mm)			
<b>Balcony 2</b> 29'11" x 5'4" (9135 x 1640mm)			



Lyall House  
Level 8

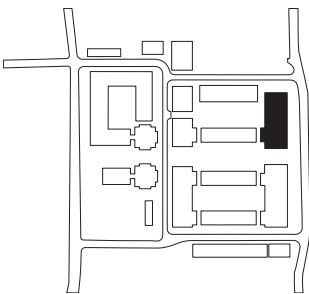


PLOT 76 (8)	PLOT 77 (8)	PLOT 78 (8)	PLOT 79 (8)
<b>Kitchen</b> 15'2" x 4'2" (4625 x 1280mm)	<b>Kitchen</b> 9'10" x 7'0" (3000 x 2130mm)	<b>Kitchen</b> 9'10" x 7'0" (3000 x 2130mm)	<b>Kitchen</b> 9'10" x 7'0" (3000 x 2130mm)
<b>Living/Dining</b> 18'4" x 10'8" (5580 x 3260mm)	<b>Living/Dining</b> 18'0" x 15'0" (5480 x 4570mm)	<b>Living/Dining</b> 18'0" x 15'0" (5480 x 4570mm)	<b>Living/Dining</b> 18'7" x 15'0" (5675 x 4570mm)
<b>Bedroom 1</b> 13'2 x 9'0" (4025 x 2750mm)	<b>Bedroom 1</b> 11'3" x 10'0" (3420 x 3040mm)	<b>Bedroom 1</b> 11'3" x 10'0" (3420 x 3040mm)	<b>Bedroom 1</b> 11'3" x 10'0" (3420 x 3040mm)
<b>En suite</b> 6'10 x 5'0" (2085 x 1535mm)	<b>En suite</b> 6'10" x 5'0" (2085 x 1535mm)	<b>En suite</b> 6'10" x 5'0" (2085 x 1535mm)	<b>En suite</b> 6'10" x 5'0" (2085 x 1535mm)
<b>Bedroom 2</b> 12'1 x 8'7" (3690 x 2615mm)	<b>Bedroom 2</b> 14'8" x 9'2" (4460 x 2785mm)	<b>Bedroom 2</b> 14'8" x 9'2" (4460 x 2785mm)	<b>Bedroom 2</b> 14'8" x 9'2" (4460 x 2785mm)
<b>Bedroom 3</b> 12'7 x 11'0" (3840 x 3350mm)	<b>Bathroom</b> 6'10" x 6'6" (2085 x 1985mm)	<b>Bathroom</b> 6'10" x 6'6" (2085 x 1985mm)	<b>Bathroom</b> 6'10" x 6'6" (2085 x 1985mm)
<b>Bathroom</b> 6'10 x 6'6" (2085 x 1985mm)	<b>TOTAL AREA</b> 861 sq ft (80.0 sq m)	<b>TOTAL AREA</b> 861 sq ft (80.0 sq m)	<b>TOTAL AREA</b> 873 sq ft (81.1 sq m)
<b>TOTAL AREA</b> 926 sq ft (86.1 sq m)	<b>Terrace</b> 39'8" x 5'8" (12100 x 1750mm)	<b>Terrace</b> 39'8" x 5'9" (12100 x 1750mm)	<b>Terrace</b> 45'10" x 5'9" (13980 x 1750mm)
<b>Terrace</b> 64'3 x 17'8" (19575 x 5380mm)			

PLOT 80 (8)	PLOT 81 (8)	PLOT 82 (8)
<b>Kitchen</b> 9'0" x 8'11" (2740 x 2715mm)	<b>Kitchen</b> 9'7" x 7'2" (2915 x 2190mm)	<b>Kitchen</b> 15'5" x 6'9" (4695 x 2050mm)
<b>Living/Dining</b> 17'6" x 11'0" (5325 x 3350mm)	<b>Living/Dining</b> 14'7" x 14'2" (4450 x 4315mm)	<b>Living/Dining</b> 15'5" x 13'7" (4705 x 4135mm)
<b>Bedroom 1</b> 15'6" x 10'4" (4720 x 3145mm)	<b>Bedroom</b> 11'11" x 10'6" (3635 x 3200mm)	<b>Bedroom 1</b> 15'2" x 9'0" (4625 x 2750mm)
<b>En suite</b> 6'10" x 5'0" (2085 x 1535mm)	<b>Bathroom</b> 6'10" x 6'6" (2085 x 1985mm)	<b>En suite</b> 6'10" x 5'0" (2085 x 1535mm)
<b>Bedroom 2</b> 13'9" x 10'3" (4195 x 3130mm)	<b>TOTAL AREA</b> 538 sq ft (50 sq m)	<b>Bedroom 2</b> 11'1" x 11'1" (3380 x 3375mm)
<b>Bathroom</b> 6'10" x 6'6" (2085 x 1985mm)	<b>Terrace</b> 29'9" x 4'6" (9060 x 1370mm)	<b>Bathroom</b> 6'10" x 6'6" (2085 x 1985mm)
<b>TOTAL AREA</b> 745 sq ft (69.2 sq m)		<b>TOTAL AREA</b> 801 sq ft (74.4 sq m)
<b>Terrace 1</b> 37'0" x 4'7" (11283 x 1410mm)		<b>Terrace</b> 39'8" x 4'6" (12100 x 1370mm)
<b>Terrace 2</b> 31'3" x 4'7" (9530 x 1410mm)		



Lyall House  
Levels 9 and 10



APARTMENT TYPE A	APARTMENT TYPE B	APARTMENT TYPE C	APARTMENT TYPE D
<b>Plot number (floor)</b> 83 (9) & 90 (10)	<b>Plot number (floor)</b> 84 (9) & 91 (10)	<b>Plot number (floor)</b> 85 (9) & 92 (10)	<b>Plot number (floor)</b> 86 (9) & 93 (10)
<b>Kitchen</b> 15'2" x 6'1" (4625 x 1850mm)	<b>Kitchen</b> 9'10" x 7'1" (3000 x 2170mm)	<b>Kitchen</b> 9'8" x 6'10" (2950 x 2080mm)	<b>Kitchen</b> 9'10" x 7'0" (3000 x 2130mm)
<b>Living/Dining</b> 18'0" x 12'11" (5475 x 3925mm)	<b>Living/Dining</b> 18'0" x 14'10" (5480 x 4530mm)	<b>Living/Dining</b> 18'0" x 15'2" (5480 x 4620mm)	<b>Living/Dining</b> 18'11" x 15'0" (5755 x 4570mm)
<b>Bedroom 1</b> 19'1" x 9'0" (5825 x 2750mm)	<b>Bedroom 1</b> 11'3" x 10'0" (3420 x 3040mm)	<b>Bedroom 1</b> 11'3" x 10'0" (3420 x 3045mm)	<b>Bedroom 1</b> 11'3" x 10'0" (3420 x 3040mm)
<b>En suite</b> 6'10" x 5'0" (2085 x 1535mm)	<b>En suite</b> 6'10" x 5'0" (2085 x 1535mm)	<b>En suite</b> 6'10" x 5'0" (2085 x 1535mm)	<b>En suite</b> 6'10" x 5'0" (2085 x 1535mm)
<b>Bedroom 2</b> 12'7" x 11'3" (3840 x 3430mm)	<b>Bedroom 2</b> 14'8" x 9'2" (4460 x 2785mm)	<b>Bedroom 2</b> 14'8" x 9'2" (4460 x 2785mm)	<b>Bedroom 2</b> 14'8" x 9'2" (4460 x 2785mm)
<b>Bedroom 3</b> 12'1" x 8'7" (3690 x 2615mm)	<b>Bathroom</b> 6'10" x 6'6" (2085 x 1985mm)	<b>Bathroom</b> 6'10" x 6'6" (2085 x 1985mm)	<b>Bathroom</b> 6'10" x 6'6" (2085 x 1985mm)
<b>Bathroom</b> 6'10" x 6'6" (2085 x 1985mm)	<b>TOTAL AREA</b> 861 sq ft (80.0 sq m)	<b>TOTAL AREA</b> 861 sq ft (80.0 sq m)	<b>TOTAL AREA</b> 873 sq ft (81.1 sq m)
<b>TOTAL AREA</b> 991 sq ft (92.1 sq m)	<b>Balcony</b> 16'10" x 4'6" (5125 x 1370mm)	<b>Balcony</b> 16'10" x 4'6" (5125 x 1370mm)	<b>Balcony 1</b> 16'10" x 4'6" (5125 x 1370mm)
<b>Balcony 1</b> 16'10" x 4'6" (5125 x 1370mm)			<b>Balcony 2</b> 16'10" x 4'6" (5125 x 1370mm)
<b>Balcony 2</b> 15'8" x 4'6" (4785 x 1370mm)			
<b>Balcony 3</b> 16'10" x 4'6" (5125 x 1370mm)			
<b>Balcony 4</b> 16'10" x 4'6" (5125 x 1370mm)			

APARTMENT TYPE E	APARTMENT TYPE F	APARTMENT TYPE G
<b>Plot number (floor)</b> 87 (9) & 94 (10)	<b>Plot number (floor)</b> 88 (9) & 95 (10)	<b>Plot number (floor)</b> 89 (9) & 96 (10)
<b>Kitchen</b> 9'0" x 8'11" (2740 x 2715mm)	<b>Kitchen</b> 9'7" x 7'2" (2915 x 2190mm)	<b>Kitchen</b> 15'5" x 6'9" (4695 x 2050mm)
<b>Living/Dining</b> 17'6" x 11'0" (5325 x 3350mm)	<b>Living/Dining</b> 14'7" x 14'2" (4450 x 4315mm)	<b>Living/Dining</b> 16'3" x 15'5" (4960 x 4705mm)
<b>Bedroom 1</b> 15'6" x 10'4" (4720 x 3145mm)	<b>Bedroom</b> 11'11" x 10'6" (3635 x 3200mm)	<b>Bedroom 1</b> 15'2" x 9'0" (4625 x 2750mm)
<b>En suite</b> 6'10" x 5'0" (2085 x 1535mm)	<b>Bathroom</b> 6'10" x 6'6" (2085 x 1985mm)	<b>En suite</b> 6'10" x 5'0" (2085 x 1535mm)
<b>Bedroom 2</b> 13'9" x 10'3" (4195 x 3130mm)	<b>TOTAL AREA</b> 538 sq ft (50 sq m)	<b>Bedroom 2</b> 11'1" x 11'1" (3380 x 3375mm)
<b>Bathroom</b> 6'10" x 6'6" (2085 x 1985mm)	<b>Balcony</b> 16'10" x 4'4" (5125 x 1330mm)	<b>Bathroom</b> 6'10" x 6'6" (2085 x 1985mm)
<b>TOTAL AREA</b> 745 sq ft (69.2 sq m)		<b>TOTAL AREA</b> 846 sq ft (78.6 sq m)
<b>Balcony 1</b> 15'8" x 4'6" (4785 x 1370mm)		<b>Balcony</b> 16'10" x 4'4" (5125 x 1330mm)
<b>Balcony 2</b> 16'10" x 4'6" (5125 x 1370mm)		



Specification

Kitchen

- Individually designed German kitchens with soft close doors & drawers
- Colour choice of wall and base units\*
- Matching worktops & full height upstands
- Under-cabinet lighting
- Integrated recycle bins
- Stainless steel single bowl sink and chrome tap to studios and one-bedroom apartments
- Stainless steel 1 ½ bowl sink and chrome tap to two and three-bedroom apartments
- Fully integrated appliances including single oven, ceramic hob, microwave, extractor, dishwasher and fridge/freezer
- Eye Level Cooking\*\*

Bathroom

- Grohe brassware
- White semi-recessed wash hand basin
- Back to wall WC pan with soft close seat
- Concealed cistern & dual flushplate
- White steel bath
- Chrome hinged bath screen
- White heated towel rail
- Bespoke mirrored wall-mounted vanity units (size of units varies upon structural opening)
- Shaver socket (mounted within wall-mounted vanity unit)
- Porcelain floor tiles
- Wall tiles

Bedrooms

- Stainfree carpets with underlay to all bedrooms
- USB points to bedroom one
- BT TV/FM connectivity to bedroom one

\*Subject to stage of construction  
\*\*Where possible

En Suite

- Grohe brassware
- White semi-recessed wash hand basin
- Back to wall WC pan with soft close seat
- Concealed cistern & dual flushplate
- White shower tray
- Chrome shower doors
- White heated towel rail
- Shaver socket
- Porcelain floor tiles
- Wall tiles

General

- Freestanding washer/dryer to hall cupboard
- Underfloor heating throughout
- Engineered flooring to kitchen, living area & hallway
- USB points to living area
- Video door entry
- BT TV/Sky+/FM connectivity to living area
- Downlighters to hallway, kitchen, living area and bathroom(s)
- Cat5e wiring
- Superfast broadband (subject to subscription)





# Why Barratt London?

**About Barratt London**

Barratt London is one of the market-leading residential developers in the Capital. With over 30 years' experience we've helped shape one of the world's most exciting, diverse and dynamic cities. We've crafted our portfolio to provide homes for all Londoners, from state-of-the-art apartments and penthouses in Westminster to riverside communities in Fulham, and complex, mixed-use regeneration schemes in Hendon.

**Five-star home builder**

As part of Barratt Developments PLC, Barratt London is incredibly proud to have been recognised as a market leader for quality. We became the first major nationwide house builder to be awarded the maximum five-star rating, every year since 2009, in the annual Home Builders Federation Customer Satisfaction survey. For our customers, this gives peace of mind that when you buy a Barratt London home, you can be confident you are buying a high-quality home and you will receive unbeatable customer service.

**Ten-year NHBC Buildmark Warranty**

When you move into a new-build home, you expect everything to be pristine and in working order. With a new Barratt London home you can expect it to stay that way, with the ten-year structural NHBC Buildmark Warranty and a two-year fixtures and fittings warranty\*.

**On-site property management**

Barratt London's on-site property management company, Barratt Residential Asset Management (BRAM), will manage and maintain our developments. This means we take care of all of the communal areas, long after you've moved in, allowing you total peace of mind when you buy a new Barratt London home.

\*First two years covered by Builder Warranty & NHBC Guarantee or similar. Years three-ten covered by NHBC insurance or similar. Full exclusions and limitations can be found on the NHBC website. Available on virtually all of our developments. Your statutory rights are unaffected.



Lombard Wharf SW11



Aldgate Place E1



Camden Courtyards NW1



Nine Elms Point SW8



Enderby Wharf SE10



# The Consumer Code

The Consumer Code for Home Builders (“the Code”), which came into effect in April 2010, applies to all Home Builders registered with the UK’s main new Home Warranty Bodies; NHBC, Premier Guarantee and LABC Warranty.

The Code gives protection and rights to purchasers of new Homes. It requires all new Home Buyers to be treated fairly and ensure they are fully informed about their purchase before and after they sign the contract.

The aim of the Code is for all new Home Buyers to:

- be treated fairly,
- know what levels of service to expect,
- be given reliable information about their purchase and their consumer rights before and after they move in, and
- know how to access speedy, low-cost dispute resolution arrangements to deal with complaints about breaches of the Code

The Code reinforces best practice among Home Builders to encourage a consistently high level of information and customer service. It builds on successful efforts already made by the industry to improve consumer satisfaction in recent years.

The Code covers every stage of the home-buying purchase – pre-contract, exchange of contract and during occupation.

As a 5 star housebuilder we are committed to the Consumer Code for Home Builders. For more information on the Consumer Code for Home Builders please visit [www.consumercode.co.uk](http://www.consumercode.co.uk)





---

FIND YOUR PIECE  
OF LONDON

---

+44 (0)844 811 4334  
UPTONGARDENS@BARRATTLONDON.COM  
BARRATTLONDON.COM

Computer generated images, maps and development layouts are intended for illustrative purposes and should be treated as general guidance only. The features, designs, materials and visual depictions of and in our Show Apartments and in our Show Apartment photography must be treated as general illustration and guidance. Images may also include upgrades which are available at extra cost. Furniture and furnishings are not included. Fixtures, fittings and specification may be subject to change as necessary and without notice and their accuracy or completeness is not guaranteed. Nor are they intended to form part of any contract or a warranty unless specifically incorporated into the contract. Please ask your Sales Adviser for the current specification. Individual features such as windows, brick and other materials' colours may vary, as may drainage, heating and electrical layouts. Floorplans are intended to give a general indication of the proposed floor layout only. The dimensions are accurate to within + or - 50mm. Dimensions should not be used for carpet or flooring sizes, appliance spaces or items of furniture. Please ask our Sales Adviser for details of the treatments specified for individual plots. Specification may be subject to change as necessary and without notice. Development layouts and landscaping, specification, dimensions and computer generated images are not intended to form part of any contract or warranty unless specifically incorporated in writing into the contract. The development name, Upton Gardens and building names are for marketing purposes only and may not be the designated postal address, which may be determined by The Post Office. All information in this document is correct to the best of our knowledge at the time of issue February 2017.



